

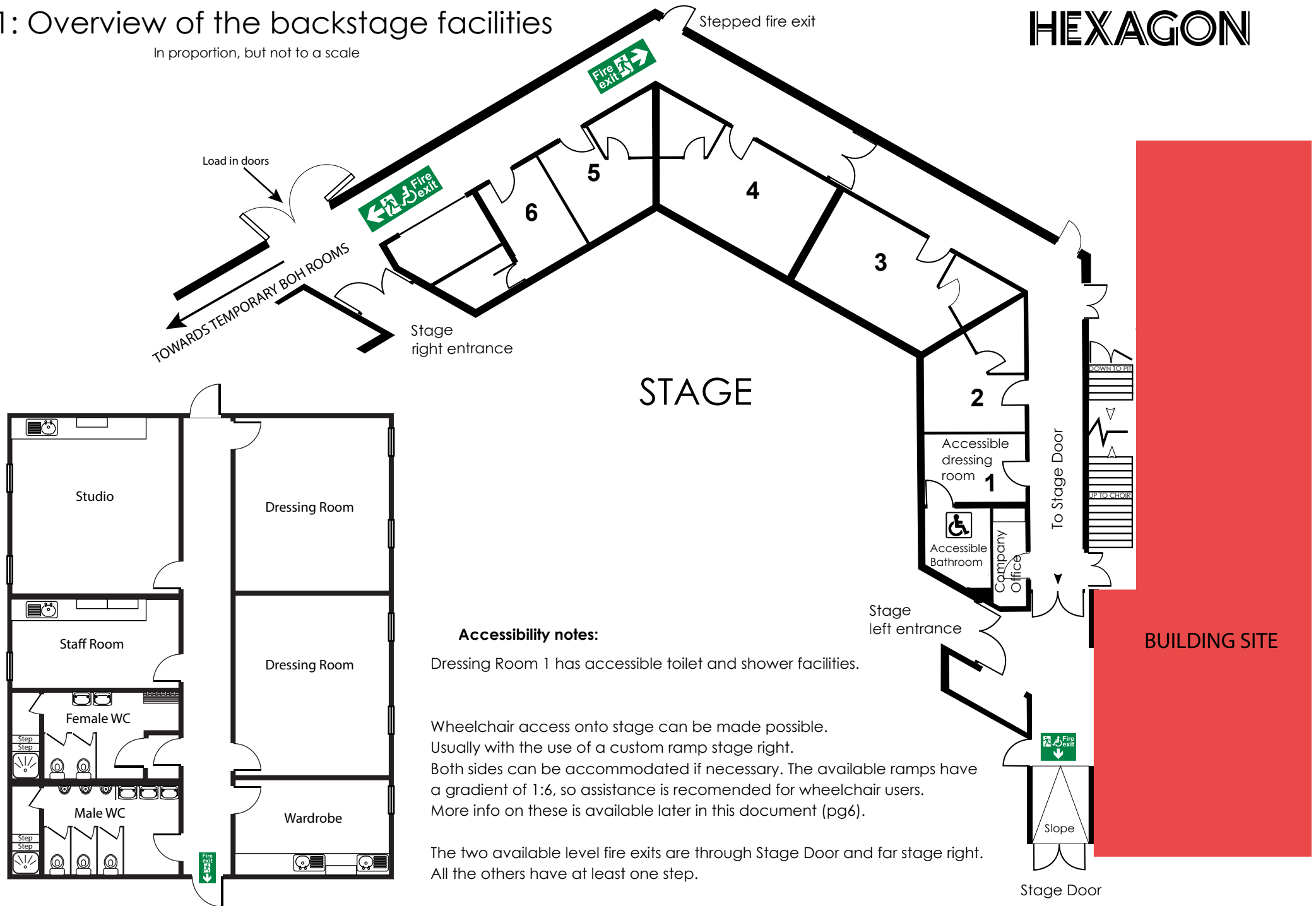
HEXAGON

- 1: Overview of backstage facilities.
- 2: Detailed plan of backstage dressing rooms.
- 3: Detailed plan of temporary backstage rooms (located away from building).
- 4: Choir and corridor plan.
- 5: Access ramp to stage information.

1: Overview of the backstage facilities

In proportion, but not to a scale

HEXAGON



Accessibility notes:

Dressing Room 1 has accessible toilet and shower facilities.

Wheelchair access onto stage can be made possible.

Usually with the use of a custom ramp stage right.

Both sides can be accommodated if necessary. The available ramps have a gradient of 1:6, so assistance is recommended for wheelchair users.

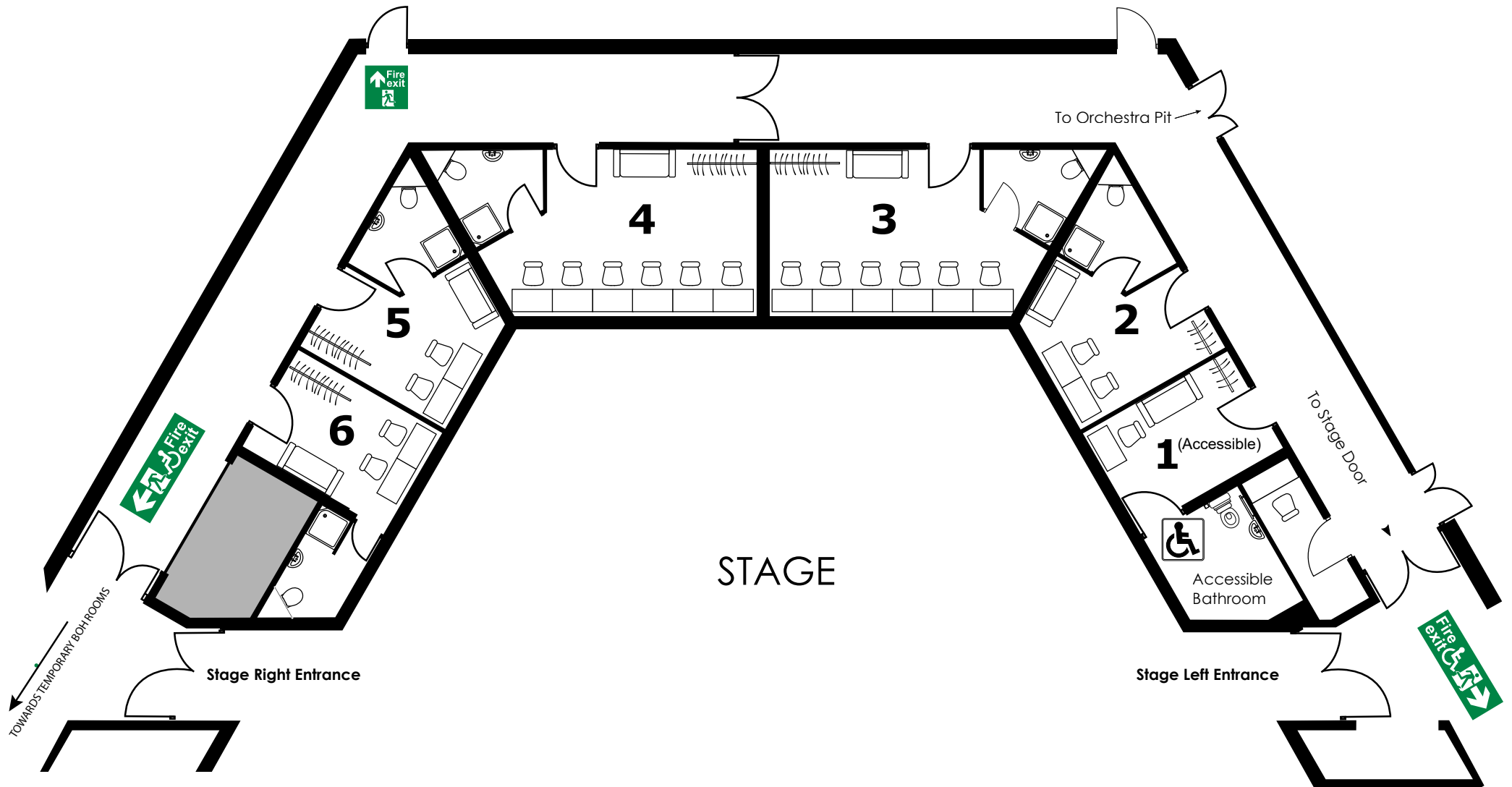
More info on these is available later in this document (pg6).

The two available level fire exits are through Stage Door and far stage right. All the others have at least one step.

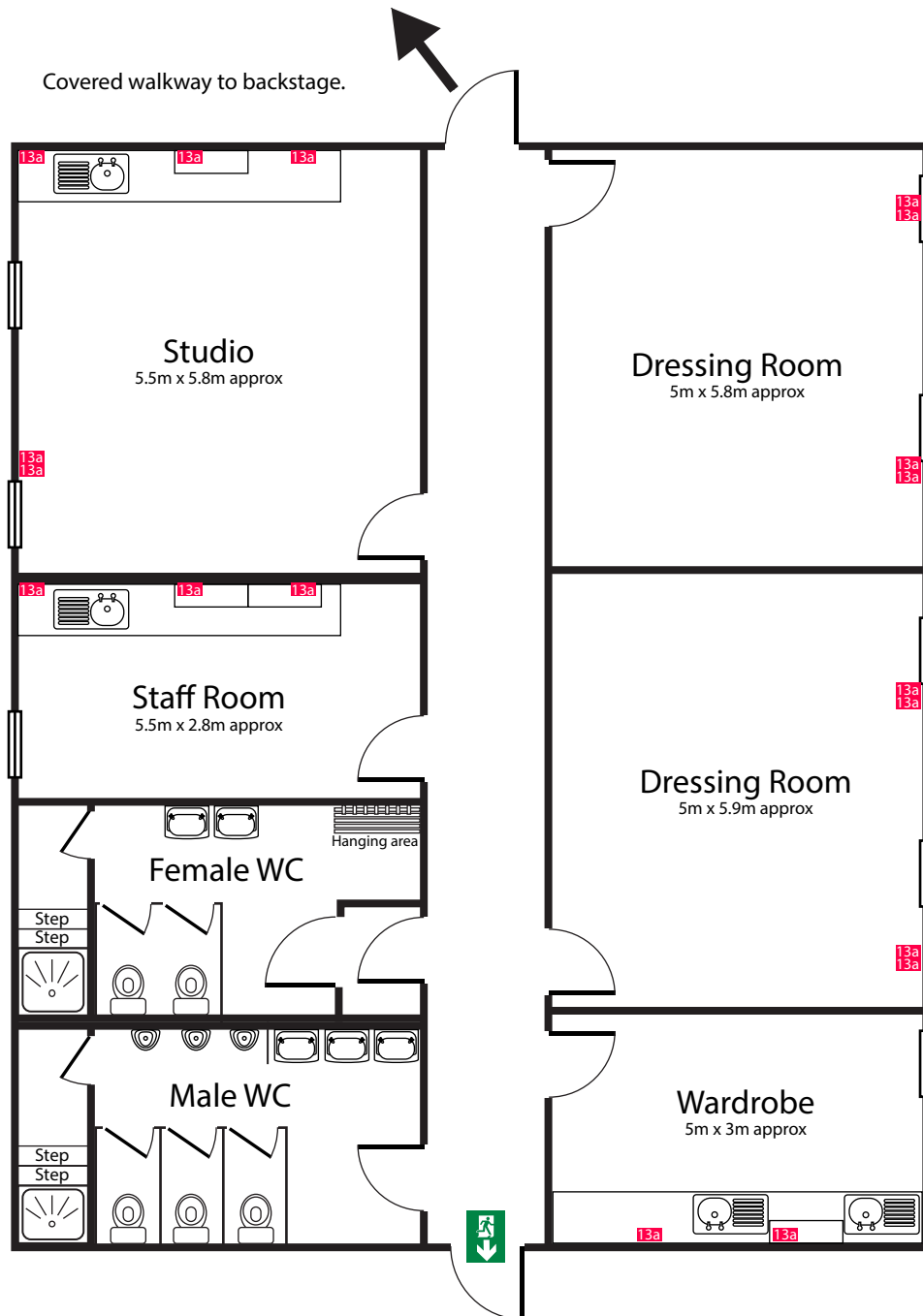
2: Detailed dressing room layout

In proportion, but not to a scale

HEXAGON



3: Detailed plan of temporary backstage rooms (located away from building).



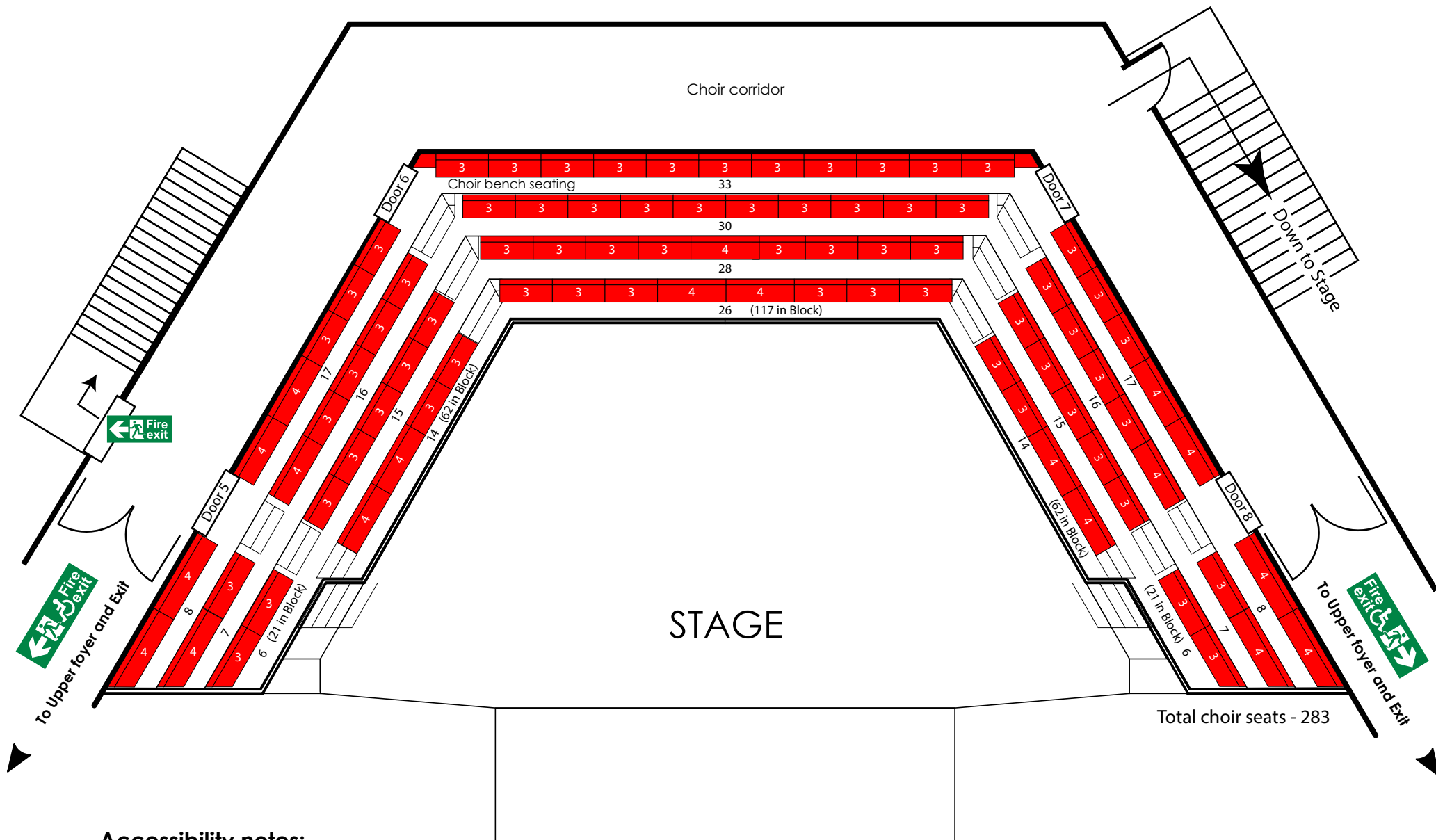
IMPORTANT NOTE:

Due to fire regulations, none of the temporary back of house rooms can be used for touring cooking facilities. Microwave use is permitted.

4: Choir and corridor plan.

In proportion, but not to a scale

HEXAGON



Accessibility notes:

Wheelchair access to the choir seating area is limited to top row ends and entry is via the upper foyer.
 Wheelchair access to the stage can be made possible via a ramp which is detailed on the following page.
 There are ramped fire exits via Box Office entrance that can be reached from either direction around the corridor.

5: Access ramp to stage information.

HEXAGON

This ramp is provided under request where wheelchair users require access to the stage.

The length of the ramp is governed by the fire exit corridors. Handrails edge the open sections and the whole assembly is against the wall along one side. Due to the relatively steep gradient (1:6) by modern standards, it is necessary for wheelchair users to have some assistance available when using these ramps. These ramps do require some time to assemble. If you foresee that you may require them, please contact the technical team in advance.

