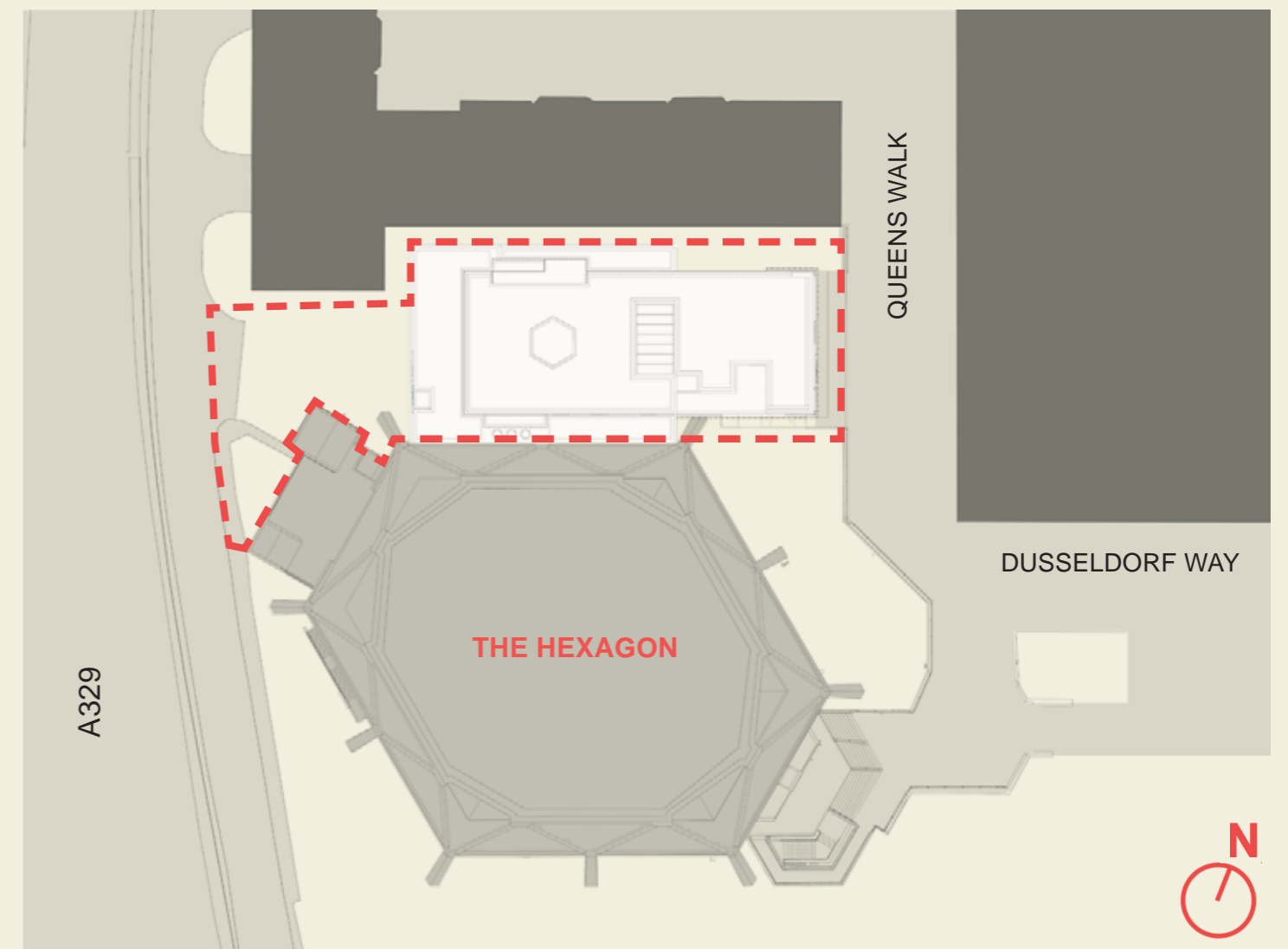


# THE HEXAGON STUDIO THEATRE

The Hexagon is expanding to become a new vibrant cultural destination for Reading. The new venue will be a cultural beacon in the regeneration of the Minster Quarter providing the catalyst for revitalising this area of the town.



Scan QR Code For More Info.  
Email [BOXOFFICE@READING.GOV.UK](mailto:BOXOFFICE@READING.GOV.UK) To Submit Comments.

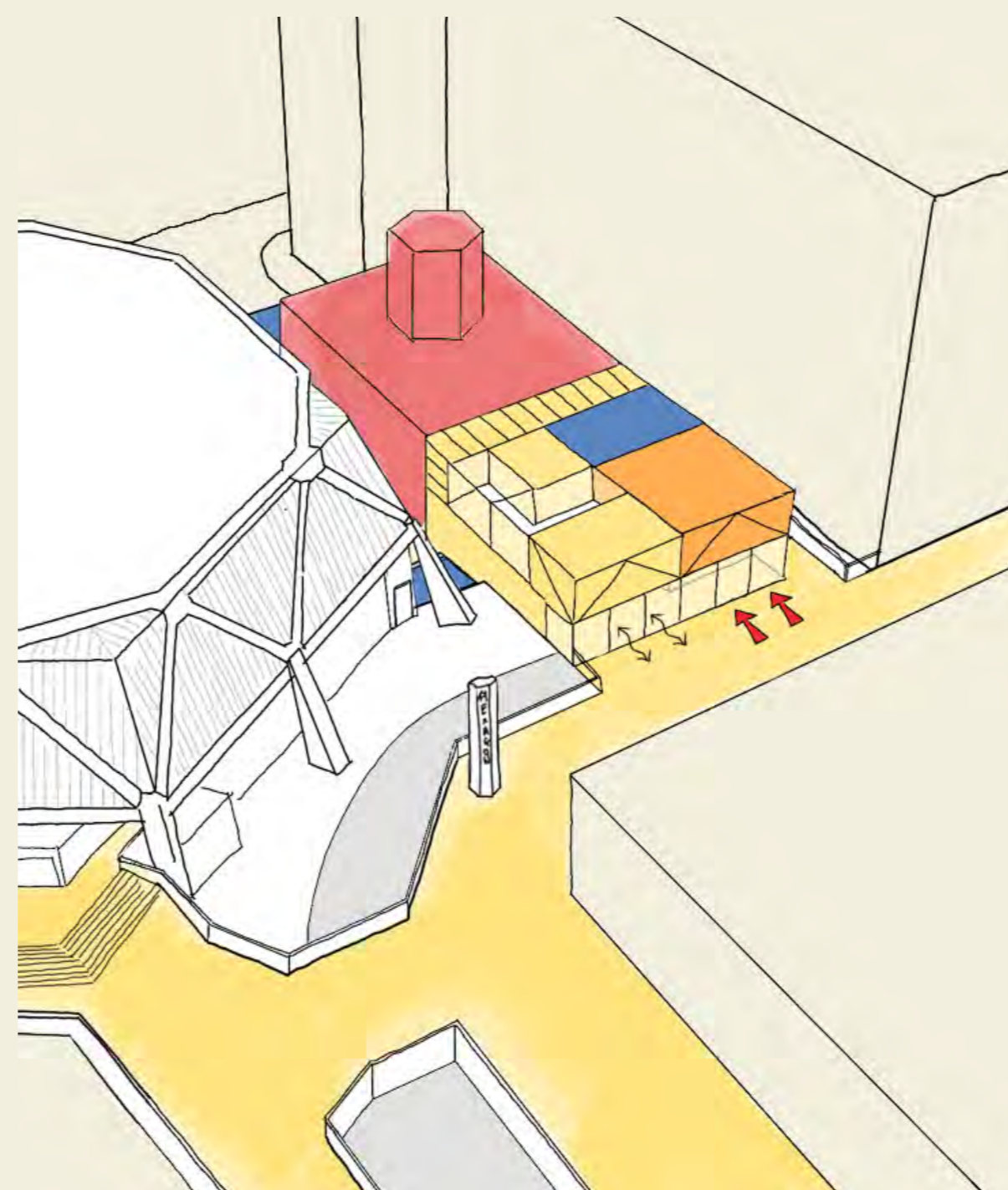


## THE VISION

The Hexagon Studio Theatre will be an accessible inviting new extension to the much-loved Hexagon Theatre with a vibrant new studio theatre, rehearsal studio, community space and café/bar. It will provide new exciting cultural opportunities with facilities for both professional, community and amateur events. This unique opportunity to expand the Hexagon, will include;

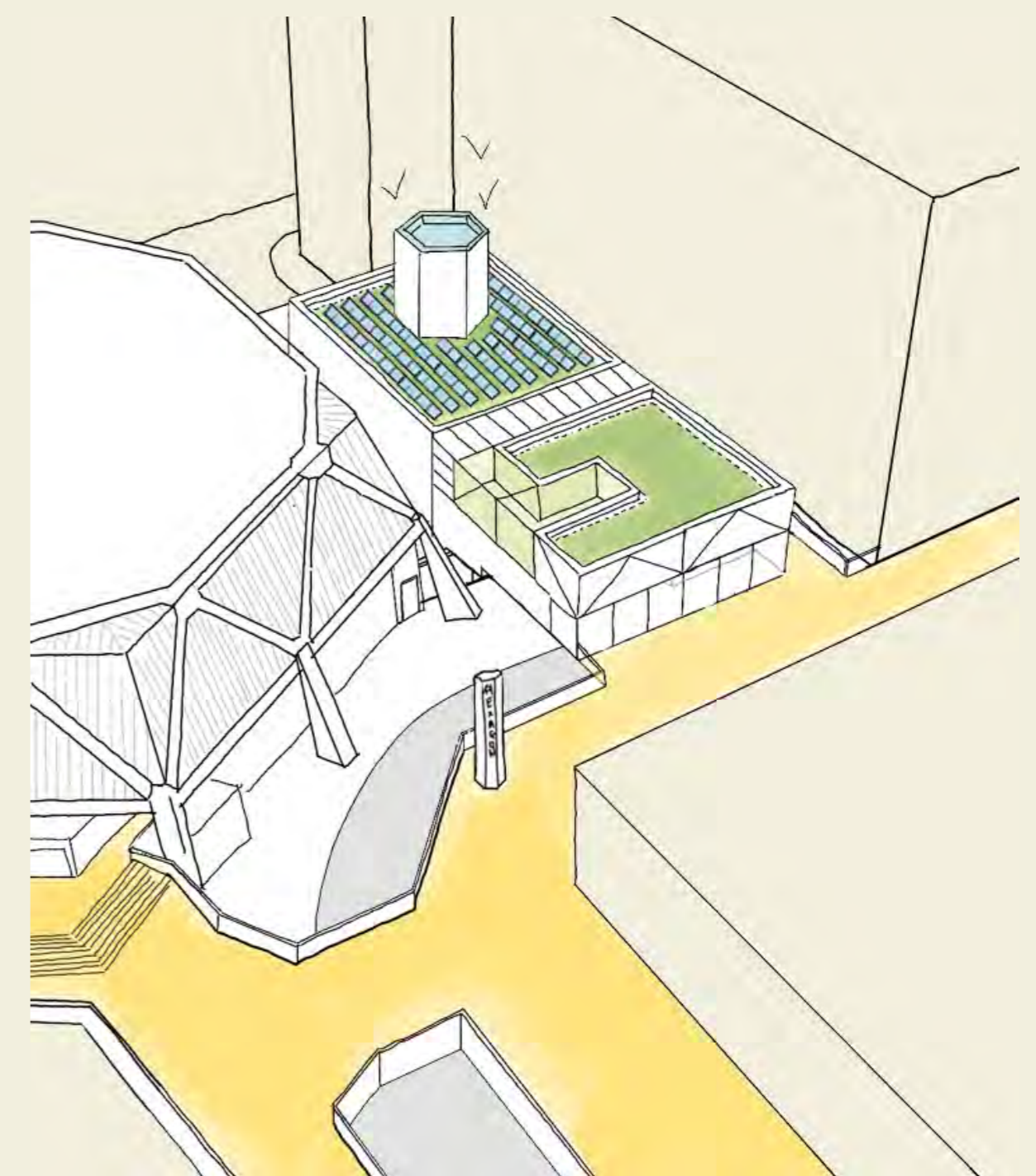
- **Studio Auditorium** - an accessible, intimate and adaptable auditorium with balcony viewing, and a range of seated and standing formats, for an audience of up to 300 people.
- **Rehearsal Studio** - a flexible rehearsal studio which can also be used for small and intimate performances, or as an extension to the foyer.
- **Community Studio** - a flexible community space which can be hired out by local groups and organisations. It has its own dedicated accessible WC and baby change facility immediately adjacent.
- **Foyers** - a welcoming, inclusive and vibrant foyer, with bar/café. Large double doors open onto a new terrace on Queens Walk, providing visitors with a lively location to gather before a show, or ample space to relax and drink coffee during the day.

Accessibility, connectivity to the Hexagon, and sustainability are core design principals in providing the new spaces



### ACCESSIBILITY & CONNECTIVITY

The studio theatre has direct step free access from Queens Walk podium and is accessible throughout, including a Changing Places room, accessible WCs and internal access to the main Hexagon Theatre foyer.



### SUSTAINABILITY

The studio theatre has high sustainability standards; incorporating air source heat pumps, solar panels, green roofs, and a well-insulated, energy efficient design.



DAY TIME EXTERNAL VIEW



NIGHT TIME EXTERNAL VIEW

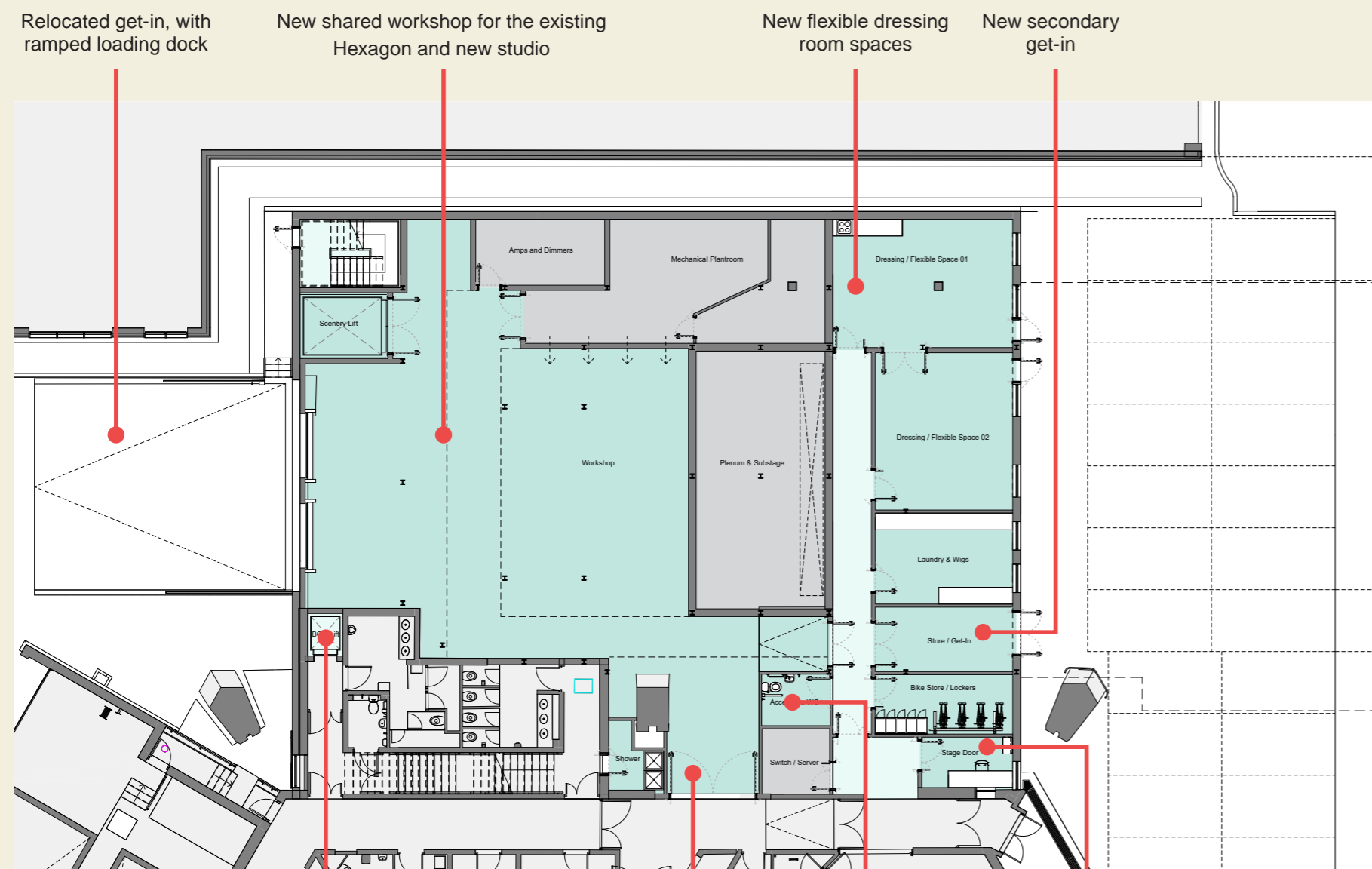
HaworthTompkins

POWERED BY  
**LEVELLING  
UP**

Funded by  
UK Government

**Reading**  
Borough Council  
Working better with you

# OVERVIEW OF PROPOSALS

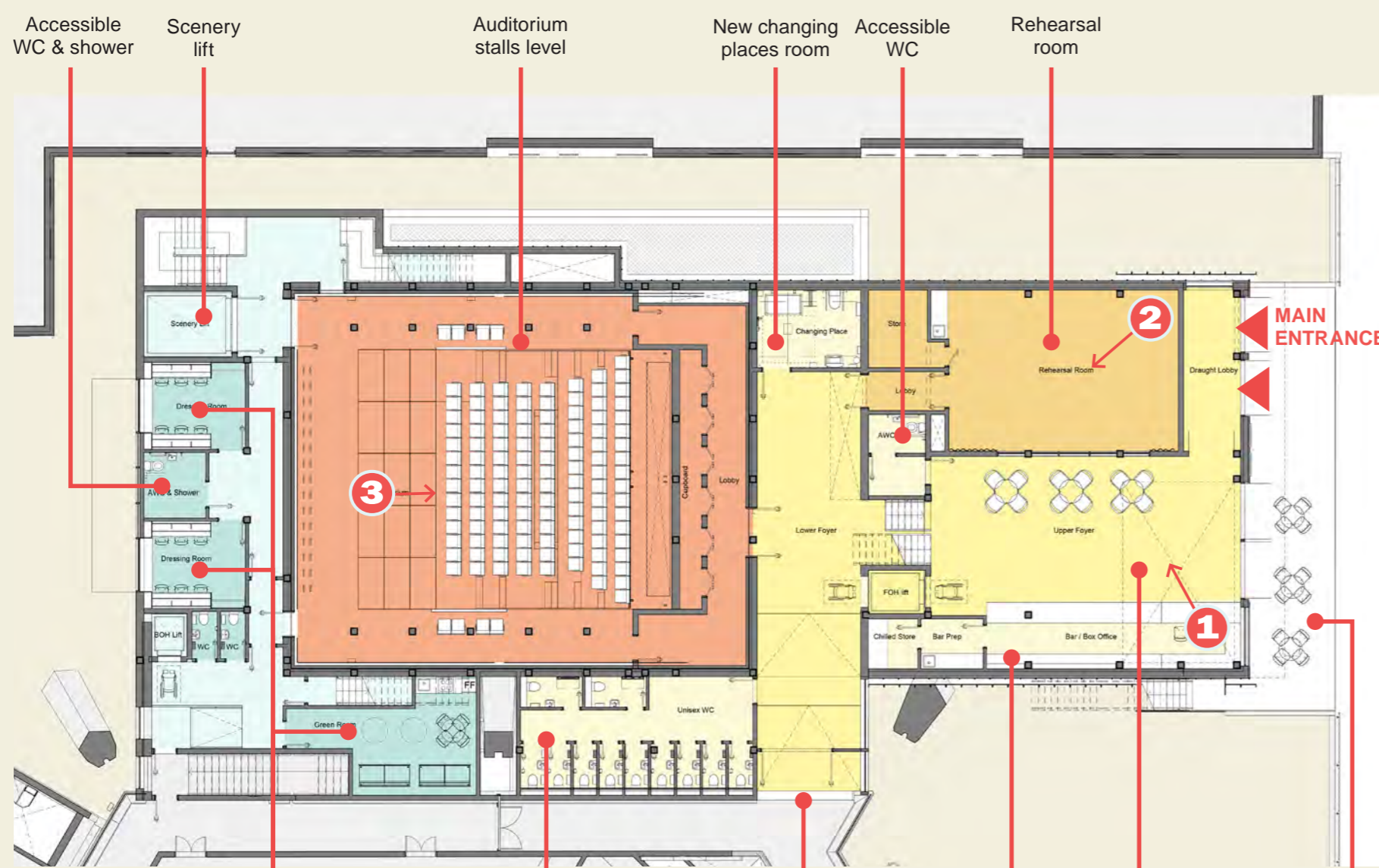


GROUND FLOOR PLAN

Relocated get-in, with ramped loading dock  
 New shared workshop for the existing Hexagon and new studio  
 New flexible dressing room spaces  
 New secondary get-in  
 BoH passenger lift to provide an accessible route between the Hexagon BoH and new studio BoH  
 Get-in remains in the same location  
 New BoH accessible WC  
 Shared stage door remains in the same location



FOYER VIEW

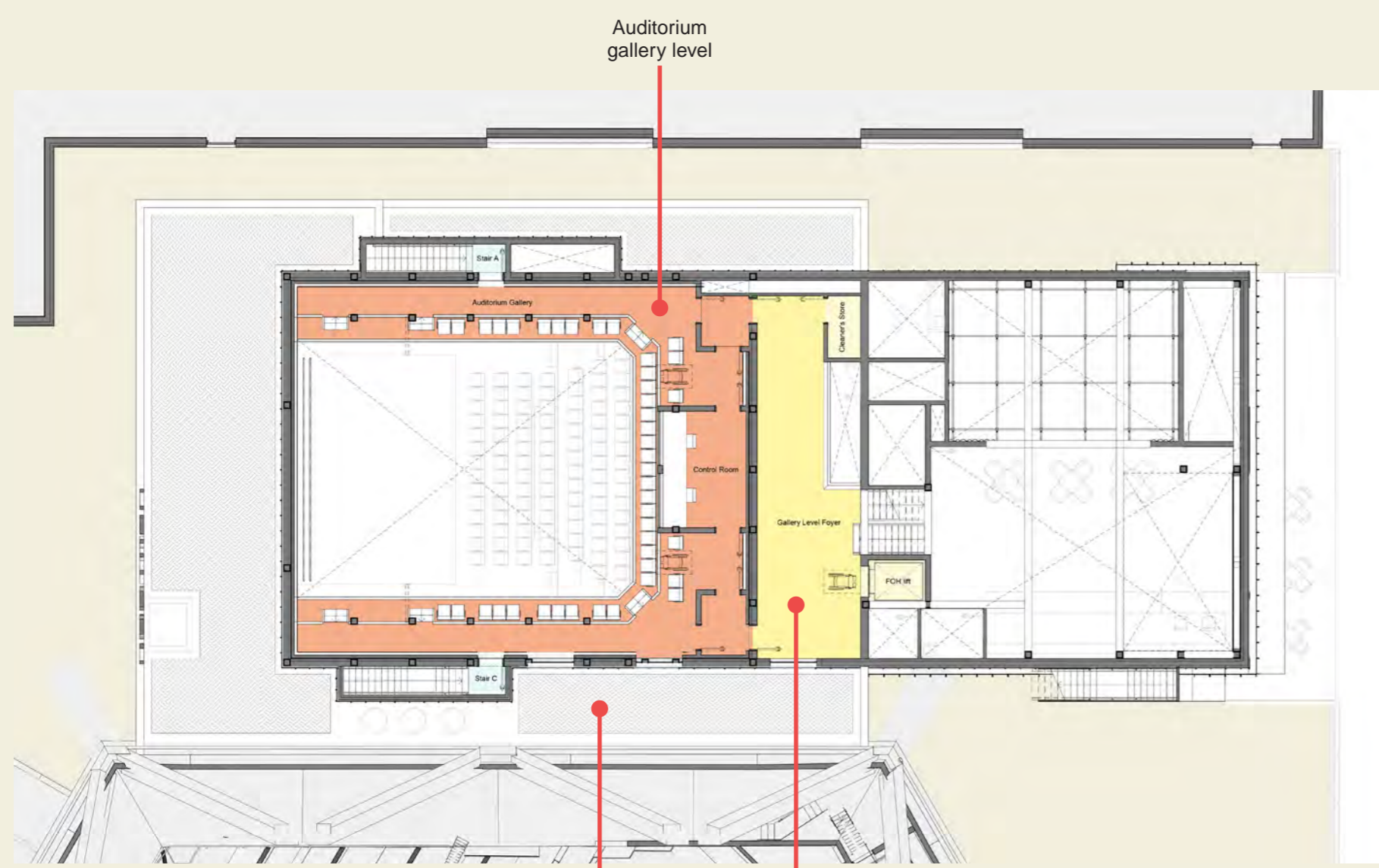


FIRST FLOOR PLAN

Accessible WC & shower  
 Scenery lift  
 Auditorium stalls level  
 New changing places room  
 Accessible WC  
 Rehearsal room  
 Dressing rooms & green room  
 Unisex WCs & baby changing facilities  
 Level access to the Hexagon foyer  
 Bar / cafe & box-office  
 Double height foyer space  
 Podium extended to provide improved public realm

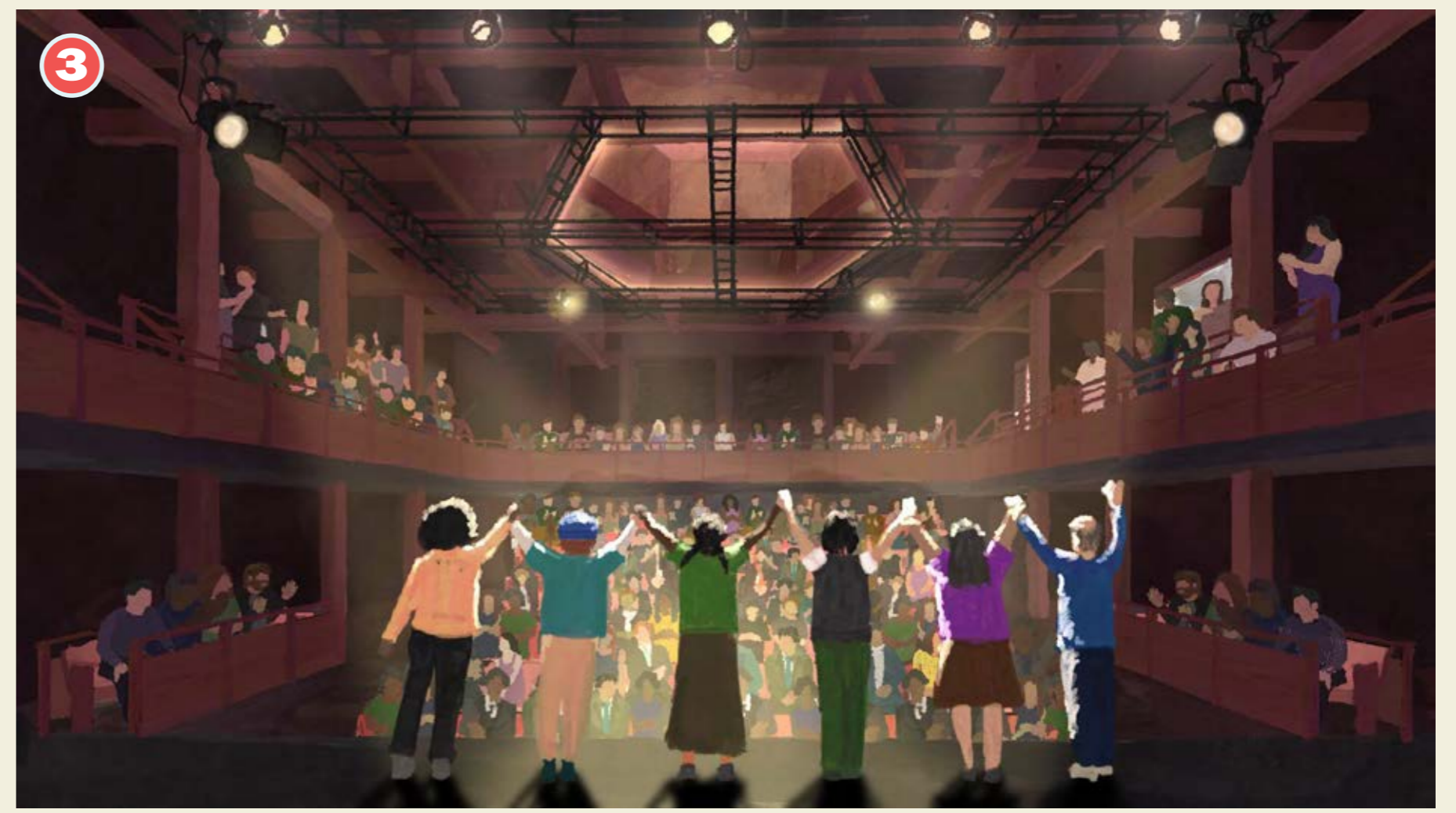


REHEARSAL ROOM VIEW

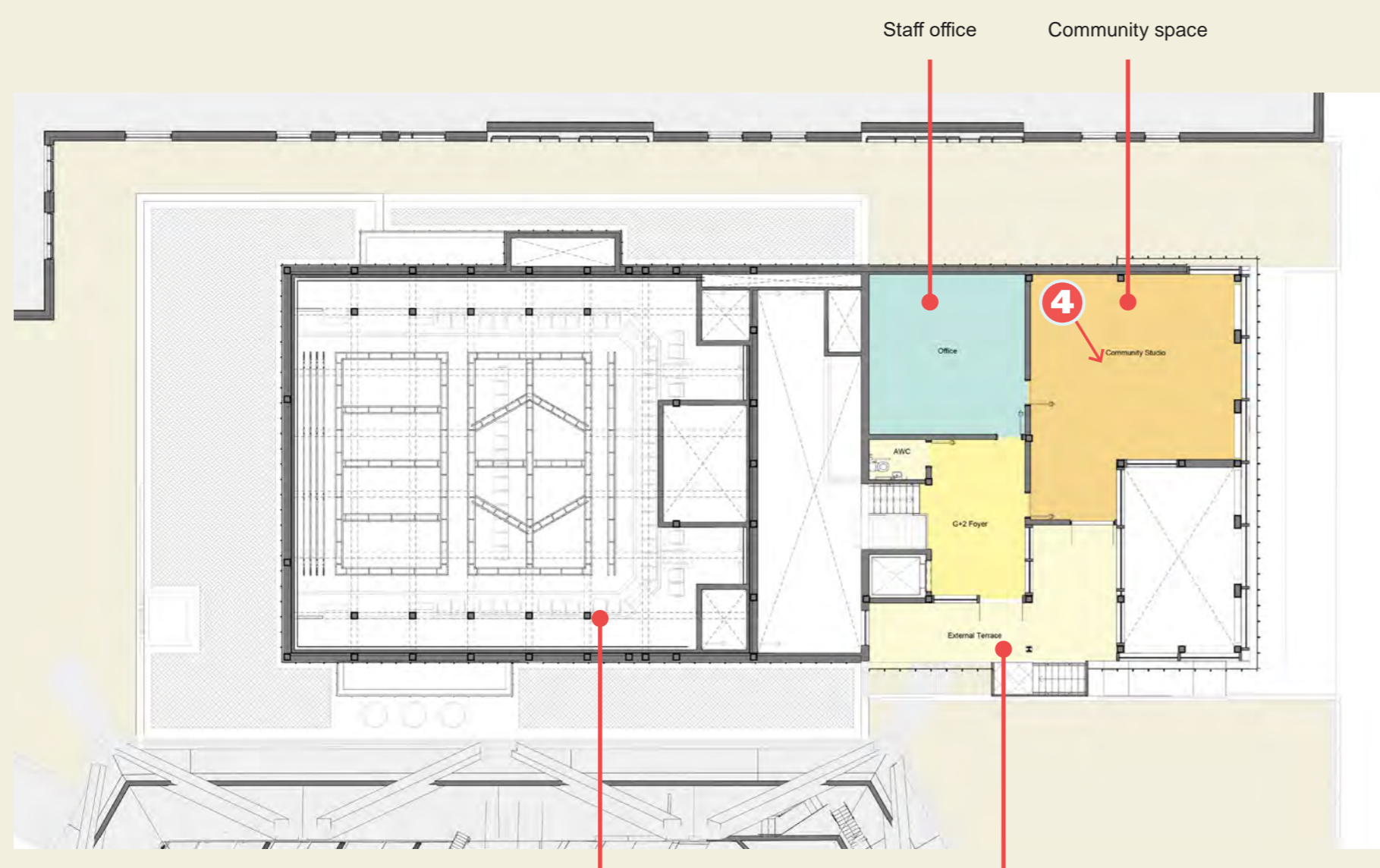


MEZZANINE FLOOR PLAN

Auditorium gallery level  
 Green roofs  
 Gallery level foyer



AUDITORIUM VIEW



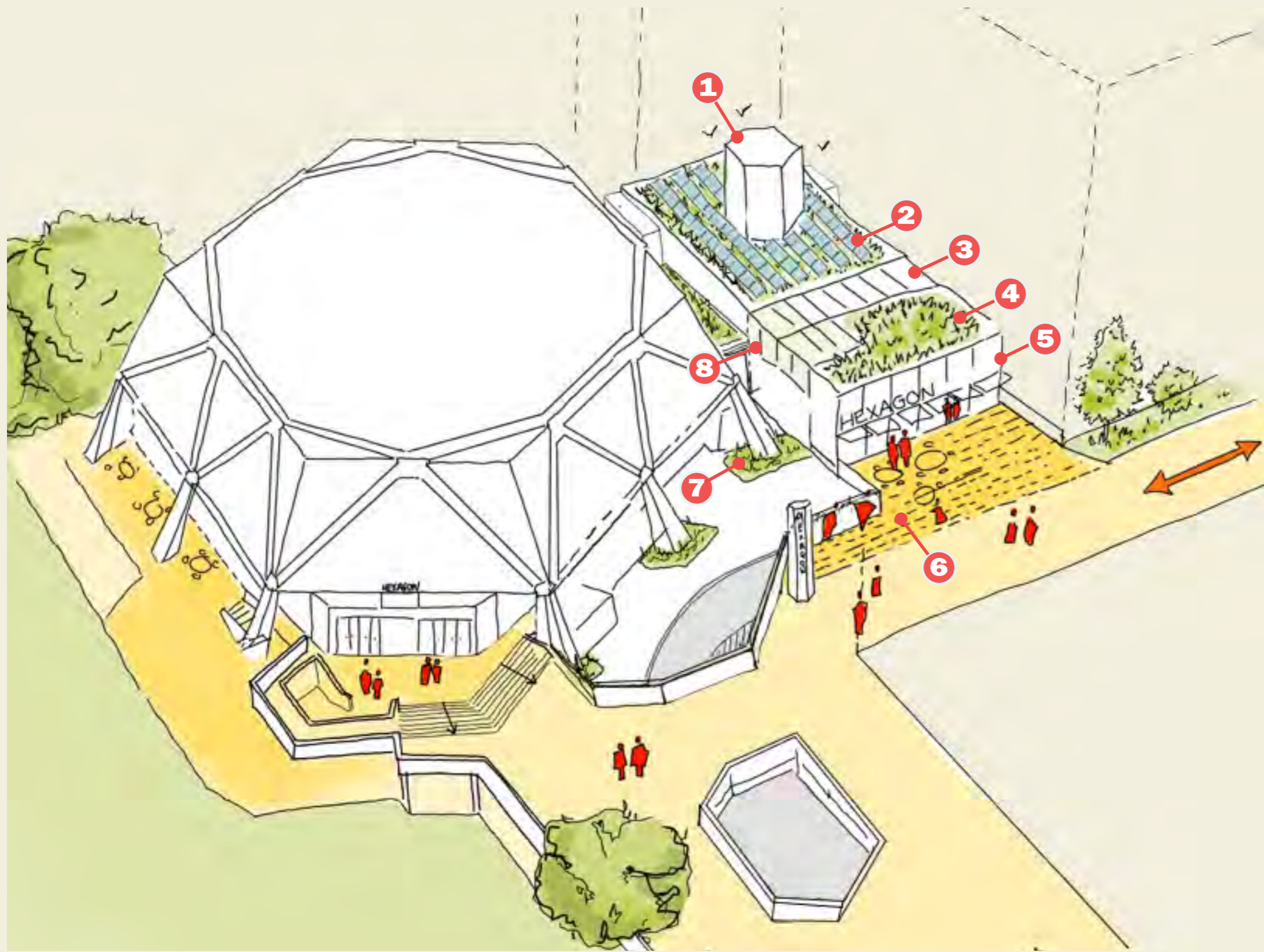
SECOND FLOOR PLAN

Staff office  
 Community space  
 Auditorium technical level  
 External terrace



COMMUNITY ROOM VIEW

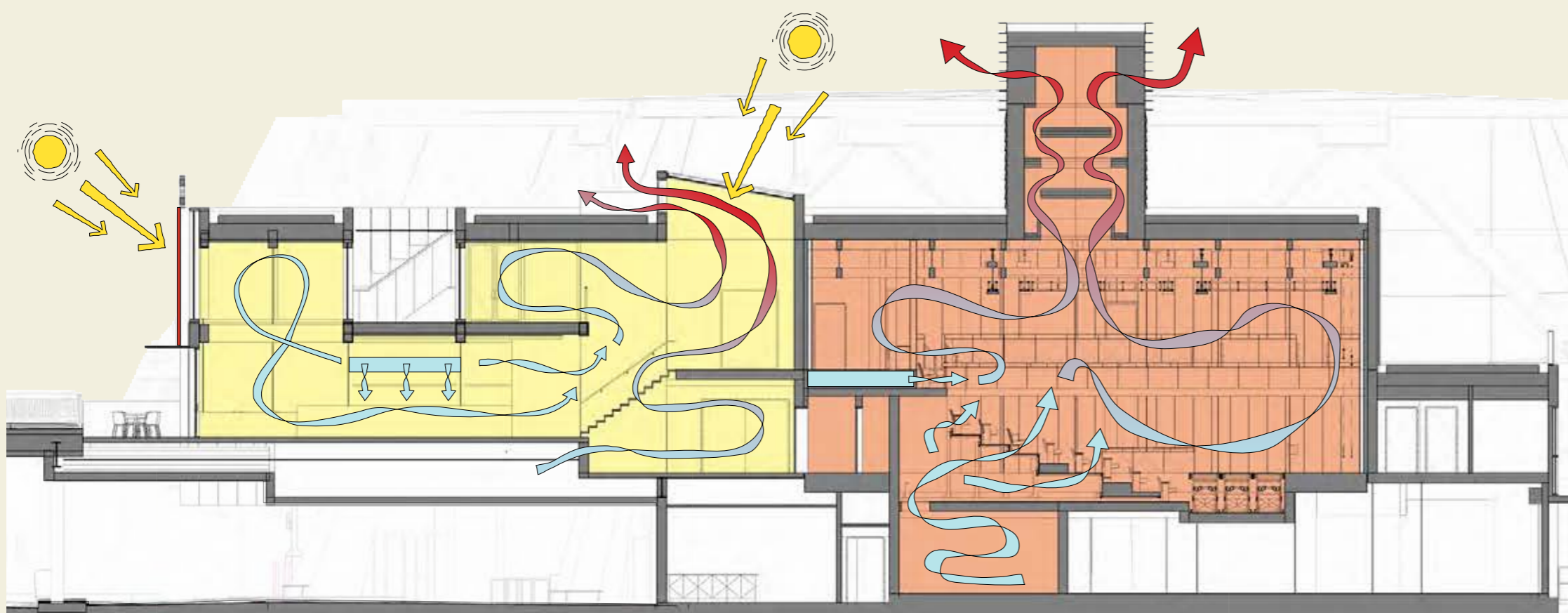
# APPROACH TO SUSTAINABILITY



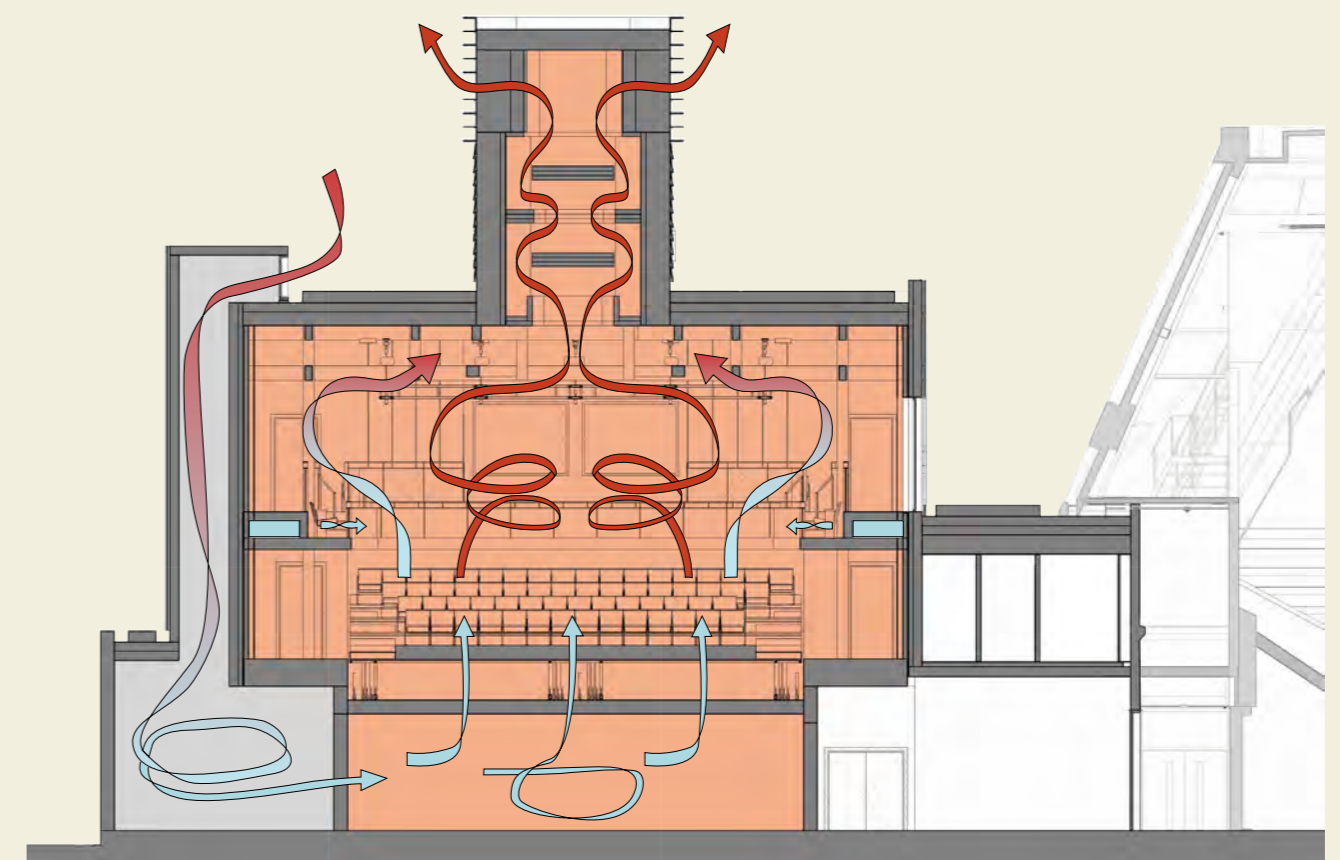
The use of renewable energy sources and passive design principles to reduce energy use and running costs help make the new studio theatre an exemplar low carbon building.

Strategies include;

- 1 Natural ventilation in the auditorium and foyers
  - 2 Solar panels
  - 3 Maximising natural sunlight in the foyers
  - 4 Green roofs
  - 5 Brise soleil & canopies to control solar gain
  - 6 Sustainable drainage (permeable paving)
  - 7 New planting
  - 8 External terrace space
- Reusing the existing concrete foundations
  - Low embodied carbon timber for structural framing and flooring
  - Low carbon heat supply via air source heat pump
  - Materials with low embodied carbon and high recycled content
  - Limiting the amount of linings required for walls and ceilings •
  - Fabric first approach to achieve low U values and air tightness to help decrease energy demand

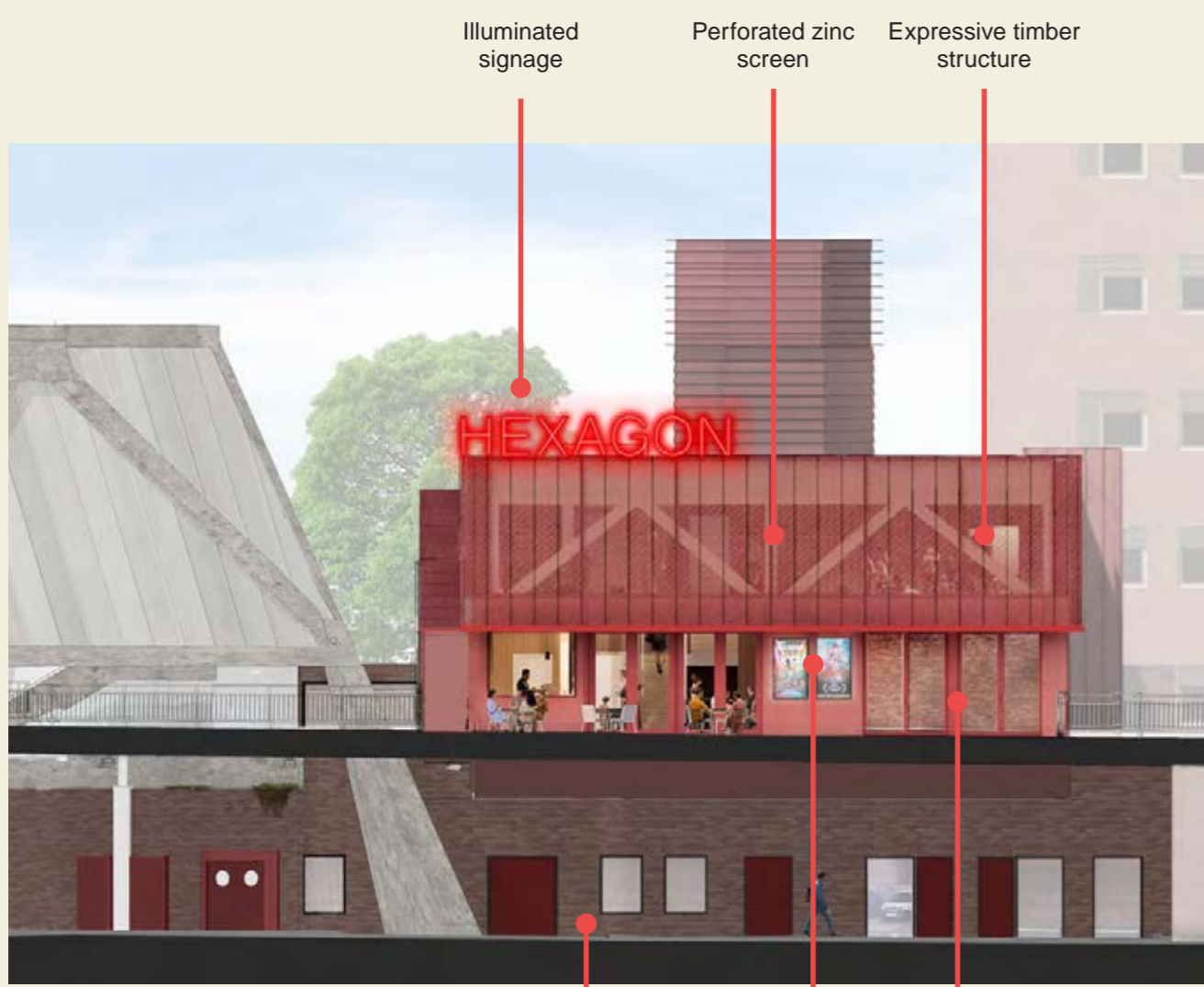


FOYER & AUDITORIUM NATURAL VENTILATION STRATEGIES



AUDITORIUM NATURAL VENTILATION STRATEGY

# FACADE PROPOSALS



EAST ELEVATION



SOUTH ELEVATION



NORTH ELEVATION



WEST ELEVATION